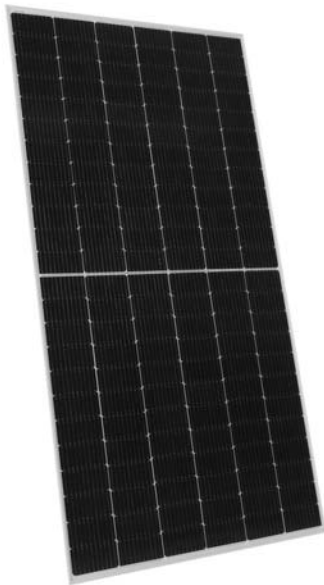
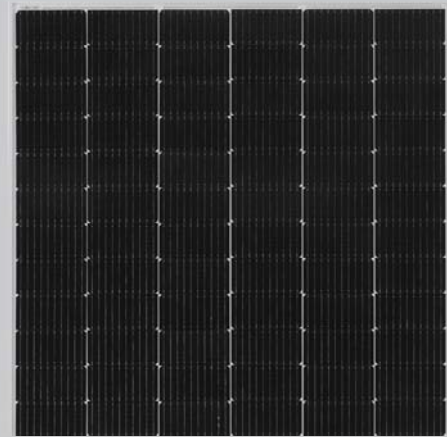


TR 72M 520-540 Watt Mono-facial

Tiling Ribbon (TR) Technology

Positive power tolerance of 0~+3%

TIGER Pro



KEY FEATURES



TR technology + Half Cell

TR technology with Half cell aims to eliminate the cell gap to increase module efficiency (mono-facial up to 21.35 %)



MBB instead of 5BB

MBB technology decreases the distance between bus bars and finger grid line which is benefit to power increase.



Higher lifetime Power Yield

2.0% first year degradation,
0.55% linear degradation



Best Warranty

12 year product warranty,
25 year linear power warranty



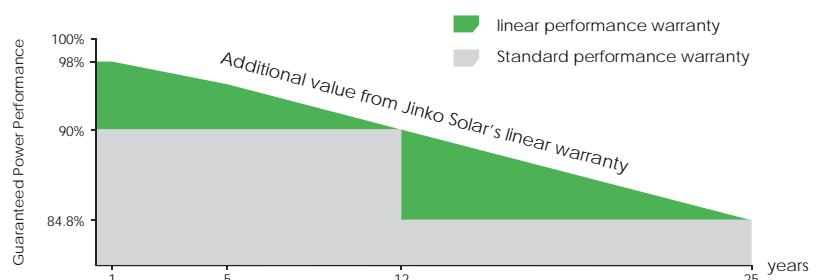
Strengthened Mechanical Support

5400 Pa snow load, 2400 Pa wind load



LINEAR PERFORMANCE WARRANTY

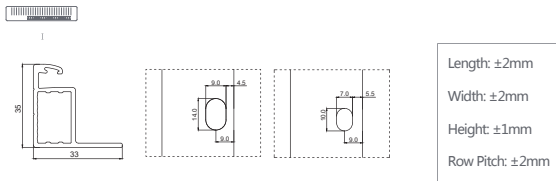
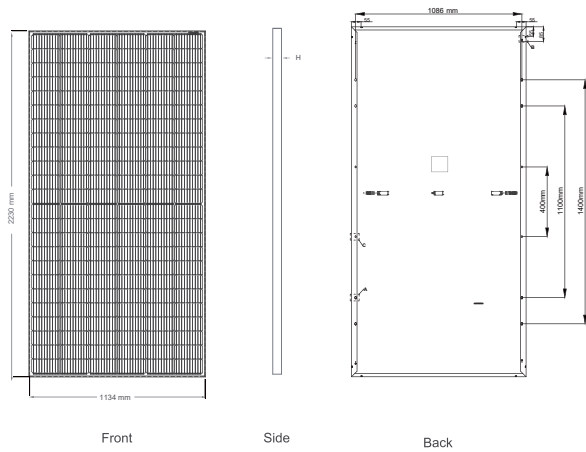
12 Year Product Warranty • 25 Year Linear Power Warranty
0.55% Annual Degradation Over 25 years



ISO9001:2015, ISO14001:2015, ISO45001:2018
certified factory

IEC61215, IEC61730 certified product

Engineering Drawings

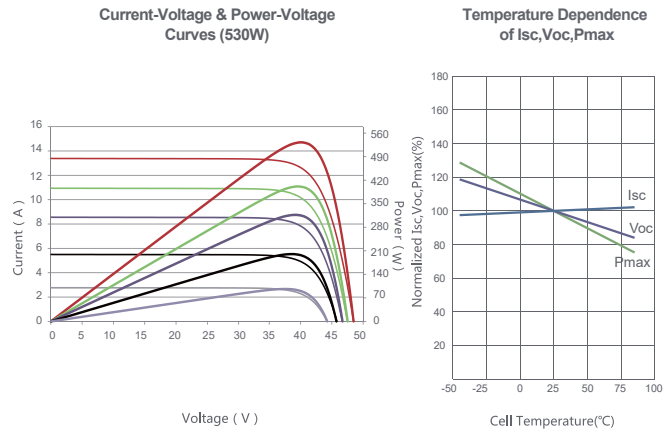


Packaging Configuration

(Two pallets = One stack)

31pcs/pallets, 62pcs/stack, 620pcs/ 40'HQ Container

Electrical Performance & Temperature Dependence



Mechanical Characteristics

Cell Type	P type Mono-crystalline
No. of cells	144 (2×72)
Dimensions	2230×1134×35mm (87.80×44.65×1.38 inch)
Weight	28.9 kg (63.71 lbs)
Front Glass	3.2mm, Anti-Reflection Coating, High Transmission, Low Iron, Tempered Glass
Frame	Anodized Aluminium Alloy
Junction Box	IP68 Rated
Output Cables	TUV 1×4.0mm ² (+): 290mm, (-): 145 mm or Customized Length

SPECIFICATIONS

Module Type	JKM520M-7TL4-V		JKM525M-7TL4-V		JKM530M-7TL4-V		JKM535M-7TL4-V		JKM540M-7TL4-V	
	STC	NOCT	STC	NOCT	STC	NOCT	STC	NOCT	STC	NOCT
Maximum Power (Pmax)	520Wp	387Wp	525Wp	391Wp	530Wp	394Wp	535Wp	398Wp	540Wp	402Wp
Maximum Power Voltage (Vmp)	40.47V	37.63V	40.61V	37.78V	40.74V	37.92V	40.88V	38.05V	41.01V	38.19V
Maximum Power Current (Imp)	12.85A	10.28A	12.93A	10.34A	13.01A	10.40A	13.09A	10.46A	13.17A	10.52A
Open-circuit Voltage (Voc)	48.99V	46.24V	49.13V	46.37V	49.26V	46.50V	49.40V	46.63V	49.53V	46.75V
Short-circuit Current (Isc)	13.53A	10.93A	13.61A	10.99A	13.69A	11.06A	13.77A	11.12A	13.85A	11.19A
Module Efficiency STC (%)	20.56%		20.76%		20.96%		21.16%		21.35%	
Operating Temperature(°C)	-40°C~+85°C									
Maximum system voltage	1500VDC (IEC)									
Maximum series fuse rating	25A									
Power tolerance	0~+3%									
Temperature coefficients of Pmax	-0.35%/°C									
Temperature coefficients of Voc	-0.28%/°C									
Temperature coefficients of Isc	0.048%/°C									
Nominal operating cell temperature (NOCT)	45±2°C									

* STC: ☀ Irradiance 1000W/m² 📏 Cell Temperature 25°C ☁ AM=1.5
 NOCT: ☀ Irradiance 800W/m² 📏 Ambient Temperature 20°C ☁ AM=1.5 🌀 Wind Speed 1m/s